

HEAnet Ethernet Point-to-Point Services

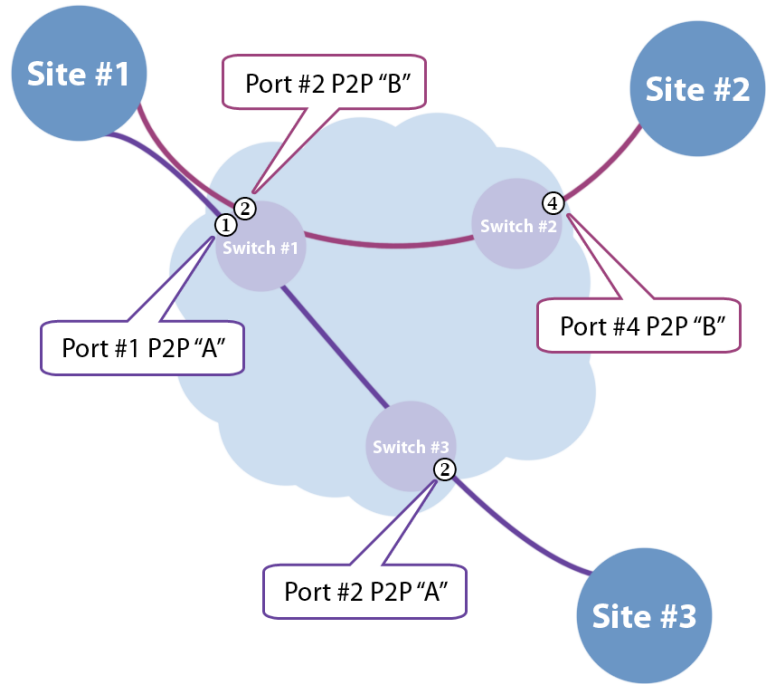
HEAnet provides two types of Ethernet services **Port mode** and **VLAN mode**

Port Mode

Port mode is a point-to-point port-based transparent Ethernet Virtual Circuit that is used primarily to connect geographically remote LANs over the HEAnet network. It provides connectivity for both layer 2 data and control plane data.

The diagram shows how two physical ports are presented to the customer from the HEAnet owned CPE. The traffic entering these ports are transported transparently across the HEAnet MPLS network using 'pseudowires'. The pseudowires then each terminate on physical ports on separate CPE devices at the two distant sites.

Supported customer equipment: Router, Switch

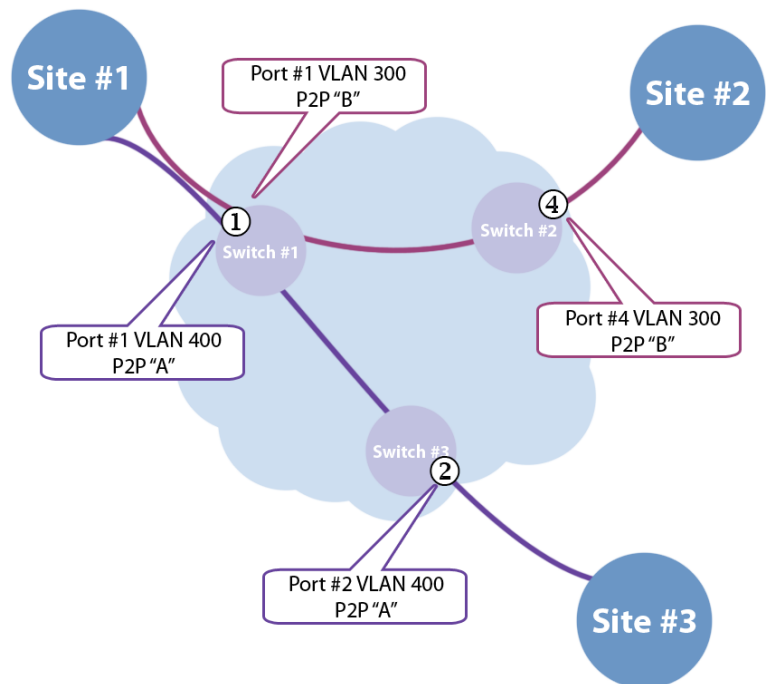


VLAN Mode

VLAN MODE is a point-to-point VLAN-based circuit. It is presented to the user as an 802.1q trunk which filters customer Layer 2 control protocols and uses the different customer VLAN IDs to direct customer traffic to different destinations. The VLAN ID has to be the same on the customer equipment and the HEAnet equipment.

The diagram shows how a customer with two different VLANs on the same physical port on the left hand side of the diagram can have the VLANs connected through the HEAnet network to two different HEAnet owned CPE ports at two different remote sites.

Supported customer equipment: Router *



* Only one customer MAC address supported
 * No Layer 2 protocols supported i.e. CDP / SPT